



Gatwick Airport Northern Runway Project

Environmental Statement

Appendix 19.6.3 Part A: 2019 Recreational User Survey

Book 5

VERSION: 1.0

DATE: JULY 2023

Application Document Ref: 5.3

PINS Reference Number: TR020005

Table of Contents

1	Introduction	1
2	Methodology	1
3	Survey Results	3
4	Conclusions	4
5	References	5
6	Glossary	5

Tables

Table 3.2.1:	Summary of User Count Surveys on NCR21	3
Table 3.2.2:	Summary of Questionnaire Responses	4
Table 6.1.1:	Glossary	5

Figures

Figure 1.2.1:	Photograph of the lake at Riverside Garden Park looking north west	1
Figure 1.2.2:	Photograph of NCR21 routing through Riverside Garden Park	1
Figure 2.2.1:	Recreational user survey locations at NCR21	2

Annexes

Annex 1:	Recreation User Count Survey Sheets (2019)	
Annex 2:	Recreation Review Proforma	

1 Introduction

1.1 General

- 1.1.1 This document forms Appendix 19.6.3 Part A of the Environmental Statement (ES) prepared on behalf of Gatwick Airport Limited (GAL) for the proposal to make best use of Gatwick Airport's existing runways and infrastructure (referred to within This document as 'the Project').
- 1.1.2 This document presents the results of the recreational user survey undertaken in 2019 to inform **ES Chapter 19: Agricultural Land Use and Recreation** (Doc Ref. 5.3). Specifically, this document outlines the survey carried out, including the methods used and the findings of the survey.

1.2 Survey Background

- 1.2.1 RPS has undertaken recreational user surveys along the alignment of National Cycle Route 21 (NCR21) within Riverside Garden Park in Horley to inform the development proposals for the Project in relation to the use of this area of public open space by non-motorised users (NMUs). The surveys were undertaken between May and August 2019. These surveys included spot counts of users of NCR21 within Riverside Garden Park, together with questionnaire surveys (see Annex 2).
- 1.2.2 Riverside Garden Park is located close to the Project site's north eastern boundary, north of the A23 and covers an area of approximately 12.3 hectares. Riverside Garden Park is an area of public open space within Horley that is bounded by the A23 London Road to the south and Gatwick Stream and residential areas of Horley to the north. Riverside Garden Park was once part of Horley Common and comprises semi-natural woodland, areas of open grassland and a lake.
- 1.2.3 Riverside Garden Park is screened from the A23 by a broad swathe of vegetation. Riverside Garden Park is owned by Reigate and Banstead Borough Council and is managed by Horley Town Council in partnership with the Borough, Sussex Wildlife Trust, Gatwick Greenspace Partnership and Horley Piscatorial Society.
- 1.2.4 Season tickets for private fishing are available and the lake is stocked with carp, crucian carp and bream. In addition, Gatwick Stream, which borders Riverside Garden Parks north eastern boundary, is home to several fish species including barbel, chub,

dace, and roach. There is a car park accessed from The Crescent in Horley and identified picnic areas.

- 1.2.5 Photographic images of the lake at Riverside Garden Park and NCR21 are presented in Figure 1.2.1 and Figure 1.2.2 below respectively.



Figure 1.2.1: Photograph of the lake at Riverside Garden Park looking north west



Figure 1.2.2: Photograph of NCR21 routing through Riverside Garden Park

- 1.2.6 NCR21 is routed through the south eastern portion of Riverside Garden Park and provides a connection between the residential development at Horley and the South Terminal of Gatwick Airport. The wider NCR21 cycle route provides approximately 95 miles of cycling route between London Greenwich and Eastbourne.

2 Methodology

2.1 Objectives

- 2.1.1 The objectives of the recreational user surveys undertaken in 2019 for the Project were as follows:
 - to provide an understanding of the existing use of NCR21 through Riverside Garden Park and adjoining routes used by pedestrians and cyclists;

- to provide an understanding of the potential impacts on all NMUs arising from the construction and operation of the Project; and
- to inform the development of the mitigation and/or enhancement proposals in relation to the provision of facilities for NMUs; and
- to provide robust baseline data on the level and type of use of this part of Riverside Garden Park and NCR21.

2.1.2 The primary purpose of this document is to: summarise the number of pedestrians and cyclists using NCR21 on a weekday, a weekend day, and a bank holiday; to record the type of activities for which people use NCR21; and draw conclusions of the typical uses of the NCR21 through Riverside Garden Park.

2.2 Survey Locations

2.2.1 The recreational user surveys were undertaken at two locations along NCR21. The surveyors moved between the two locations to avoid interaction with the large number of geese grazing along the shore of the lake. The recreational user survey locations were as follows:

- Location 1: On NCR21 at the end of the eastern end of the lake; and
- Location 2: On NCR21 between the lake and the Gatwick Stream.

2.2.2 The location of the recreational user surveys are shown in Figure 2.2.1. The recreational user survey locations were identified to capture maximum NMU activity within the Riverside Garden Park. NCR21 is the main surfaced route through Riverside Garden Park for recreational users and those travelling to work on cycle or foot.

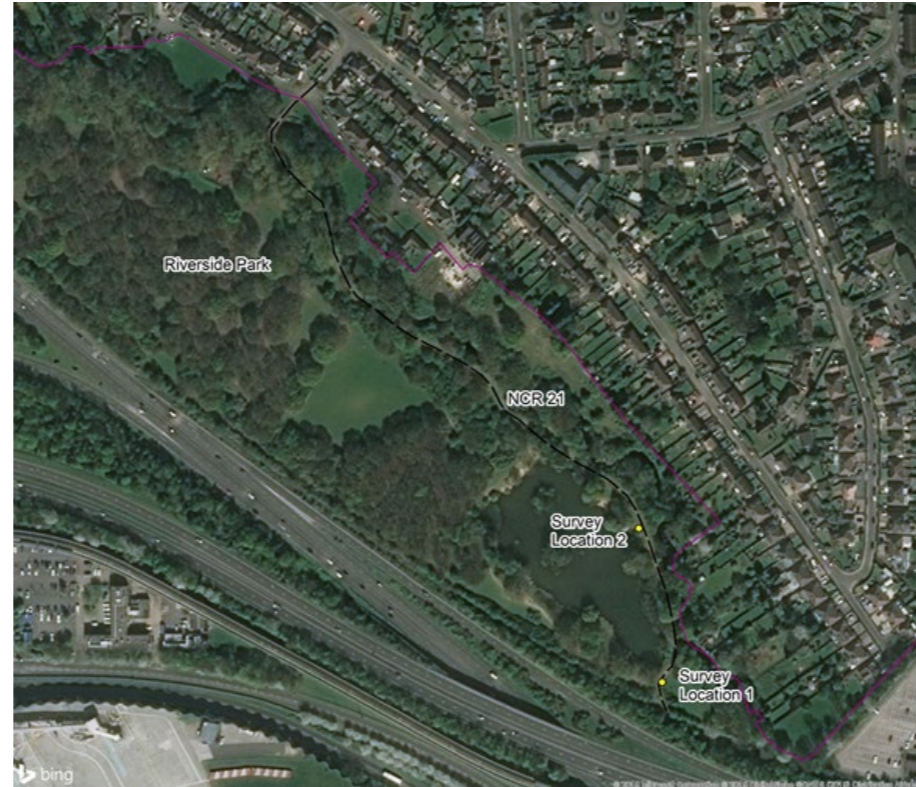


Figure 2.2.1: Recreational user survey locations at NCR21

2.3 Scope of the Surveys

2.3.1 To establish the extent of use of NCR21 at the identified survey locations, the surveys were conducted using on site observers, who recorded the type and frequency of use and requested further information from users in the form of a questionnaire (see Annex 2).

2.3.2 The spot count user surveys described in This document provide information about the nature and use of NCR21 within Riverside Garden Park from survey locations 1 and 2 on the following dates:

- Saturday 25 May 2019 (Bank Holiday Weekend);
- Monday 15 July 2019 (Weekday); and
- Sunday 11 August 2019 (Weekend).

2.3.3 The data recorded represent the situation at these locations during the days on which recreational user surveys took place.

2.4 Survey Methodology

2.4.1 No methodology is provided for the counting of pedestrians within the Design Manual for Roads and Bridges (DMRB) LA 112 Population and Human Health (Highways England *et al.*, 2009).

2.4.2 As such, the methodology set out in the former DMRB Volume 11, Section 3, Part 8 (Pedestrians, Cyclists, Equestrians and Community Effects) (Highways Agency *et al.*, 1993) has been used as guidance for the recreation user surveys on NCR21 within Riverside Garden Park.

2.4.3 Annex 1 of DMRB Volume 11, Section 3, Part 8 (Pedestrians, Cyclists, Equestrians and Community Effects) states the following with respect to survey counts:

“Counts of pedestrian flows should be arranged so that the results are as representative as possible of typical flows. They should generally take place over two days, preferably spread out over a number of months, to avoid variations caused by the weather or local factors. Spring or autumn are likely to be the most appropriate times of year. In residential areas, counts taken on a weekday during school term time are likely to be most typical. In holiday or recreational areas, counts during the summer months will probably be required. All pedestrian journeys between 8 am and 6 pm should be counted and their direction indicated (in exceptional circumstances, longer hours may be needed to reflect local factors).”

2.4.4 This methodology focuses primarily on the collection of flow data to determine the number of people likely to be affected by changes to journey patterns and lengths because of a development. Whilst it is not intended to specifically cover recreational surveys, it provides a framework for collecting data on the use of linear routes by pedestrians and other NMUs.

2.4.5 In this instance, the data collected has been extended to include cyclists, as well as capturing some of the characteristics and activities of users. The recreation surveys were undertaken in late Spring/Summer of 2019 due to programming restrictions. The surveys involved counting of total NMU movements (ie in both directions). However, it is considered that the results are as representative as possible of typical flows along NCR21.

2.4.6 The survey dates were chosen to include a weekday (to reflect everyday use of NCR21), a weekend day and a bank holiday weekend (as this tends to coincide with the greatest level of use of NCR21 and the wider Riverside Garden Park). The surveys took place between 8:00 am and 6:00 pm, during the hours of daylight. The number and type of user was recorded at 30 minute intervals.

2.4.7 At the start of each survey day, the ground and weather conditions were recorded and any significant changes during the day were noted. The surveyors were positioned as a pair at the survey location. The surveyors recorded users of NCR21 in the following categories (see Annex 1):

- pedestrian, including dog walkers;
- cyclist; and
- other (eg runner or jogger).

2.4.8 Survey counts were limited to one recording per individual to avoid double-counting of individuals who used NCR21 multiple times per survey day.

2.4.9 To develop a more comprehensive understanding as to the purpose of existing use of NCR21 and the wider Riverside Garden Park, a questionnaire survey was also conducted. A copy of the questionnaire is provided at Annex 2. Users of NCR21 were asked to answer questions to enable data to be collected under the categories outlined below:

- resident/visitor¹;
- activity being undertaken;
- purpose;
- time spent on the activity;
- start and finish location of activity;
- frequency of use of the public right of way;
- distance from primary residence;
- nature of party (eg family group);
- group size;
- whether dogs were accompanied by the user of the public right of way;
- age group; and
- gender (male/female).

2.4.10 Not all users observed using the Public Rights of Way network during the surveys answered questions on the questionnaire. The reasons for this included the following:

- refusal;
- previously surveyed; and
- observed users too distant to be questioned.

2.5 Survey and Analysis

2.5.1 This document presents the results of these user surveys within the area of Riverside Garden Park that may be affected by the

Project, together with the results of the questionnaire responses. The information gained from these user surveys is sufficient to provide an indication of the level and purpose of use of NCR21 and the broader area of open space within Riverside Garden Park.

3 Survey Results

3.1 Survey Weather and Ground Conditions

3.1.1 The following weather conditions were recorded during the recreational user surveys undertaken in 2019:

- Saturday 25 May 2019 (Bank Holiday Weekend) – Dry with cloud and sunny intervals (maximum 20°C).
- Monday 15 July 2019 (Weekday) – Dry and warm with sunny intervals (maximum 21°C).
- Sunday 11 August 2019 (Weekend) – Warm with sunny intervals and some cloud and scattered light rain (maximum 20°C).

3.1.2 The weather was good during all three recreational surveys. Therefore, the survey data collected is considered to represent normal levels of activity.

3.1.3 The ground conditions recorded at NCR21 for survey locations 1 and 2 comprised a hard-surfaced tarmac path providing a shared route for pedestrians and cyclists.

3.1.4 The A23 is screened from Riverside Garden Park by thick vegetation, and whilst road noise was discernible on all survey days, it did not appear to affect use of Riverside Garden Park. Aircraft noise was also evident on all survey days due to the proximity of Riverside Garden Park to Gatwick.

3.2 Level of Use

3.2.1 The completed user count survey sheets are included at Annex 1 of this document. A summary of the user survey counts for each of the surveys undertaken is provided in Table 3.2.1 below.

Table 3.2.1: Summary of User Count Surveys on NCR21

	Bank Holiday Weekend Saturday (25 May 2019) 8 am – 6 pm (10 hours)	Weekday Monday (15 July 2019) 8 am – 6 pm (10 hours)	Weekend Sunday (11 August 2019) 8 am – 6 pm (10 hours)
Number of Pedestrian Movements	222	211	217
Number of Cyclist Movements	151	127 (+ a group of 14 school children on a cycling course)	111
Number of Jogger Movements	12	20	19
Others	5 mobility scooters	4 mobility scooters	3 mobility scooters
Total number of NMU movements	390	362	350

3.2.2 The surveys demonstrate that NCR21 within Riverside Garden Park is well used at all times (ie on a weekday, a weekend day and on a bank holiday weekend). Some of the walkers and cyclists were also observed coming from/going to the informal path running alongside the southern side of the lake from NCR21.

3.2.3 On the bank holiday weekend of Saturday 25 May 2019, most of those walking along NCR21 were recreational users, approximately 30% of whom were walking a dog and who were observed at all times of the day. Peak activity for those without a dog was between 14:30 and 15:30. One family were observed walking through Riverside Garden Park on their way back from holiday with suitcases.

3.2.4 Approximately 4% of users observed were walking to/from their place of work. By contrast nearly 18% of cyclists were travelling

¹ A visitor was defined as someone who lived outside of the study area and not in one of the settlements close to the new section of motorway corridor.

to/from work and using NCR21 regularly throughout the day. Three people were observed fishing in the lake.

- 3.2.5 On Monday 15 July 2019 the majority (46%) of those walking along NCR21 were recreational users but there was a lower number of dog walkers (approximately 16.5%) and a higher number (nearly 20%) were walking to/from work than the numbers observed at the weekend. Peak activity was between 12:00 and 14:00 and included walkers using Riverside Garden Park on their lunch break (approximately 10%). A larger number of holidaymakers (approximately 7.5%) were also observed walking through Riverside Garden Park along NCR21 to/from the airport than had been the case at the weekend.
- 3.2.6 As expected, the majority (approximately 72.5%) of those cycling along NCR21 on the weekday were travelling to/from work, with the remainder (27.5%) being recreational cyclists. A slightly higher number of joggers were also observed on the weekday, with a slight peak between 12:00 and 13:00 and later in the day between 17:00 and 17:30. Two people were observed fishing in the lake on the weekday.
- 3.2.7 On the weekend day of Sunday 11 August 2019 there were a similar number of pedestrians to those observed on the bank holiday and on the weekday. There were fewer dog walkers, with most observed between 08:00 and 09:30. There was a noticeable peak in walking activity between 09:30 and 10:30 in the morning, followed by a lunchtime/early afternoon peak between 12:30 and 15:00 and a later afternoon peak between 16:00 and 17:30. Cyclists were observed at all times of the day with a slight peak between 11:30 and 13:30. Most joggers were observed in the morning between 08:30 and 11:00. One person was observed fishing in the lake.
- 3.2.8 Approximately 60 questionnaires were completed across the three survey days. A summary of the questionnaire responses over all the survey days are detailed in Table 3.2.3 below. These were predominantly compiled from responses to those using NCR21 and the wider Riverside Garden Park for recreational purposes since those who were walking or cycling to/from work were generally reticent to stop and answer questions.
- 3.2.9 Notably, some of those using Riverside Garden Park were doing so either between flights at the airport or where they needed to stay overnight locally to catch their connecting flight the next day. In addition, cyclists using NCR21 were more difficult to interview as they were generally travelling at a speed that made them more difficult to approach than pedestrians.

Table 3.2.2: Summary of Questionnaire Responses

Are you a resident of the area or are you a visitor?	
Resident	84%
Visitor	16%
What activity are you doing here today?	
Walking	88%
Running / Jogging	2%
Cycling	5%
Other (mobility scooter)	5%
How long will you spend on this activity today?	
Under 1 hour	80%
1 - 4 hours	18%
Over 4 hours	2%
How often do you use this route?	
More than once a week	72%
More than once a month	13%
More than twice a year	0%
More than once a year	0%
Less than the above	15%
How far away from here do you live?	
Under 2 miles	80%
2 - 5 miles	6%
6 - 10 miles	1.5%
11 - 20 miles	1.5%
Up to 100 miles	0%
Elsewhere in the UK	3%
Elsewhere in the World	8%
What is the nature of your party?	
A single person	61%
A group of young people all under 25	3%
A group of adults	18%
A group of people all over 60	5%
A family group	13%
An organised group	0%
Does the user have a dog with them (or more than one)?	
Yes	51%

No	49%
Age group of users?	
Below 15 years	11%
16 - 60 years	68%
Over 60 years	21%
Sex of user?	
Male	56%
Female	44%

3.2.10 The questionnaire responses presented in Table 3.2.3 indicate the following user trends along NCR21, the connecting network of paths and the wider Riverside Garden Park.

- most users are local residents (84%);
- the main activity is walking (88%);
- most users spend under an hour on their activity (80%);
- the majority (72%) of those using Riverside Garden Park do so frequently (ie more than once a week);
- most users live within two miles of Riverside Garden Park (80%);
- most users comprise a single person group (61%);
- there is an almost even split between those walking dogs and those without a dog;
- most users fall within the 16-60 age group; and
- there are slightly more male users (56%).

3.2.11 The results from both the user count survey and the questionnaire illustrate that NCR21 within Riverside Garden Park is a well-used resource, primarily by local residents who live close to Riverside Garden Park, for recreational purposes and as a means of access on foot or cycle to their place of work.

4 Conclusions

4.1.1 The surveys carried out on the three survey days between May and August 2019 provide an indication of the quantity and characteristics of the usage of NCR21 and the wider Riverside Garden Park on both a weekday, a weekend day and on a weekend bank holiday day. These can be summarised by the below statements.

- NCR21 and the wider Riverside Garden Park are well used by pedestrians and cyclists on all days of the week.

- It was observed on all survey days that the car park within Riverside Garden Park is also well used, with pedestrians observed accessing the western area of Riverside Garden Park away from NCR21. This use was not recorded as part of the surveys.
- The users are comprised of those who use NCR21 to get to and from their place of work, either on foot or by cycle and local residents who use the route and the wider Riverside Garden Park as a recreational resource.
- During the week it was observed that Riverside Garden Park is also used as a resource for airport workers during lunch breaks.
- The surveys identified several pedestrians who use Riverside Garden Park as a resource either between flights at the airport or as a means of accessing local accommodation between connecting flights where these require an overnight stay.

4.1.2 It is considered that both the level of use and range of activities recorded on the three survey days at this location and the characteristics of the users are likely to reflect those that may be expected during similar times of the week throughout the year and under similar weather conditions.

4.1.3 Considering the observed use of NCR21, the connecting paths and the wider area of public open space, it is clear that Riverside Garden Park is a well-used resource by local residents, airport workers and visitors both on foot and by cycle.

4.1.4 Any proposals that have the potential to disrupt the land or routes within Riverside Garden Park would need to take careful account of this and develop a package of well thought out mitigation measures to ensure that pedestrian and cyclist access is maintained, particularly between Horley, Gatwick airport and Horley/Gatwick train stations within a well vegetated area of public open space. If land within Riverside Garden Park is lost, this mitigation package would require the provision of additional land to serve as public open space within the local neighbourhood.

5 References

Highways England, Transport Scotland, Welsh Assembly Government and The Department for Regional Development Northern Ireland (2009) Design Manual for Roads and Bridges (DMRB) LA 112 Population and human health.

Highways Agency, Transport Scotland, Welsh Assembly Government and The Department for Regional Development Northern Ireland (1993) Design Manual for Roads and Bridges (DMRB) Volume 11, Section 3, Part 8 Pedestrians, Cyclists, Equestrians and Community Effects.

6 Glossary

6.1 Glossary of Terms

Table 6.1.1: Glossary

Term	Description
DMRB	Design Manual for Roads And Bridges
EIA	Environmental Impact Assessment
ES	Environmental Statement
GAL	Gatwick Airport Limited
NCR	National Cycle Route
NMU	Non-Motorised Users

Annex 1

Recreation User Count Survey Sheets (2019)

Surveyors		Julia Tindale and Eunice Stephenson			
Location		Riverside Garden Park - National Cycle Route 21			
Date		Saturday 25 May 2019			
Weather conditions		Dry with cloud and sunny intervals – maximum 20°C			
Time	Walker	Cyclist	Jogger	Other	Comment
08:00-08:30	5	2	1	0	
08:30-09:00	8	0	0	0	
09:00-09:30	4	5	0	0	
09:30-10:00	7	2	0	0	
10:00-10:30	10	2	2	1	Mobility scooter
10:30-11:00	12	7	1	0	
11:00-11:30	6	9	1	0	
11:30-12:00	8	7	0	0	
12:00-12:30	6	20	0	0	
12:30-13:00	9	11	0	0	
13:00-13:30	16	11	1	0	
13:30-14:00	7	10	1	0	
14:00-14:30	8	14	0	0	
14:30-15:00	31	13	0	0	
15:00-15:30	25	11	0	1	Mobility scooter
15:30-16:00	12	4	0	1	Mobility scooter
16:00-16:30	11	14	0	1	Mobility scooter
16:30-17:00	11	3	0	1	Mobility scooter
17:00-17:30	14	2	3	0	
17:30-18:00	12	4	2	0	
Totals	222	151	12	5	

Surveyors		Eunice Stephenson and Anna Gillespie			
Location		Riverside Garden Park - National Cycle Route 21			
Date		Monday 15 July 2019			
Weather conditions		Dry and warm with sunny intervals – maximum 21°C			
Time	Walker	Cyclist	Jogger	Other	Comment
08:00-08:30	2	6	0	0	
08:30-09:00	11	10	0	0	
09:00-09:30	4	5	0	0	
09:30-10:00	5	3	0	0	
10:00-10:30	6	2	0	0	
10:30-11:00	9	0	0	0	
11:00-11:30	6	4	1	0	
11:30-12:00	12	4	0	0	
12:00-12:30	9	5	2	0	
12:30-13:00	19	6	5	0	
13:00-13:30	19	3	1	0	
13:30-14:00	13	2	0	0	
14:00-14:30	12	4	2	0	
14:30-15:00	6	2	2	0	
15:00-15:30	10	7	1	1	Mobility scooter
15:30-16:00	10	7	0	1	Mobility scooter
16:00-16:30	10	12	0	0	
16:30-17:00	11	13	1	0	
17:00-17:30	19	15	4	2	Mobility scooters
17:30-18:00	18	17	1	0	
Totals	211	127	20	4	

Surveyors		Anna Gillespie and David Gabb			
Location		Riverside Garden Park - National Cycle Route 21			
Date		Sunday 11 August 2019			
Weather conditions		Warm with sunny intervals and some cloud and scattered rain -maximum 20°C			
Time	Walker	Cyclist	Jogger	Other	Comment
08:00-08:30	5	5	0	0	
08:30-09:00	8	3	6	0	
09:00-09:30	6	6	6	0	
09:30-10:00	15	4	1	0	
10:00-10:30	15	6	1	0	
10:30-11:00	2	3	3	0	
11:00-11:30	6	4	0	0	
11:30-12:00	10	12	0	0	
12:00-12:30	6	12	0	0	
12:30-13:00	15	6	0	0	
13:00-13:30	24	10	0	0	
13:30-14:00	11	4	0	1	Mobility scooter
14:00-14:30	19	3	0	1	Mobility scooter
14:30-15:00	13	9	0	0	
15:00-15:30	8	1	0	0	
15:30-16:00	7	2	0	0	
16:00-16:30	13	10	1	1	Mobility scooter
16:30-17:00	20	7	1	0	
17:00-17:30	10	2	0	0	
17:30-18:00	4	2	0	0	
Totals	217	111	19	3	

Annex 2

Recreation Questionnaire Proforma

Interviewers		Date	
Location	Riverside Garden Park – NCNR 21	Time	
Weather conditions			
1	Are you a resident of the area or are you a visitor?		
1	Resident		
	Please specify location:		
2	Visitor		
	Please specify location:		
2	What activity are you doing here today?		
1	Walking		
2	Running/Jogging		
3	Cycling		
4	Horse riding		
5	Riding/Driving powered vehicle		
6	Other, please specify:		
3	How long will you spend on this activity today?		
1	Under 1 hour		
2	1 to 4 hours		
3	Over 4 hours		
5	Where did you start from your activity today?		
1	Specify location		
6	Where will you finish your activity today?		
1	Specify location		
7	How often do you use this route?		
1	More than once a week		
2	More than once a month		
3	More than twice a year		
4	More than once a year		
5	Less than the above		

8	How far away from here do you live?	
1	Under 2 miles	
2	2 – 5 miles	
3	6 – 10 miles	
4	11 – 20 miles	
5	21 – 30 miles	
6	31 – 100 miles	
7	Elsewhere in the UK	
9	Elsewhere in the World	
	Thank you for your time and trouble in giving this information	

	ADDITIONAL INFORMATION – TO BE RECORDED	
9	Nature of the party?	
1	A single person	
2	A group of young people all under 25	
3	A group of adults	
4	A group of people all over 60	
5	A family group	
6	Organised party	
10	Number of people in the party/group?	
1	1	
2	2	
3	Up to 5	
4	Up to 10	
6	Over 10	
11	Does the person/party have a dog with them (or more than one)?	
1	Yes	
2	No	
12	Age group of person/party?	
1	Below 15 years	
2	16 – 60 years	
3	Over 60 years	

	ADDITIONAL INFORMATION – TO BE RECORDED	
13	Sex of person/party?	
	Male	
	Female	